

Actuator Type L, Double Acting- Technical Data, Summary



Wirematic Trutorq double-acting pneumatic cylinder type L is designed to be reliable during tough operating conditions and it is available in several sizes ranging from ACL-100 up to ACL-230 and larger on request.

The cylinder is in anodized aluminium and the covers are powder coated aluminium in order to resist corrosive environments.

The Namur interface according to VDI/VDE 3845 makes it easy to install the solenoid valve directly onto the cylinder.

The cylinder can be supplied with stroke limitation, pre-installed magnetic limit switches and solenoid valve upon delivery.

The supply pressure for the cylinder should be maximum 10 bar and the air should be dry or oil mist.

▶ VALVE ADAPTER

The ACL cylinder can be supplied with a valve adapter and a gate clevis set for perfect match to different knife gate valves, according to customers' requirements..



▶ NAMUR INTERFACE FOR SOLENOID VALVES

Solenoid valves can easily be installed directly onto the cylinder according the Namur interface VDI/VDE 3845. In this way the solenoid valve-cylinder unit becomes really compact.



▶ SELF CONTAINED CONTROL SYSTEM

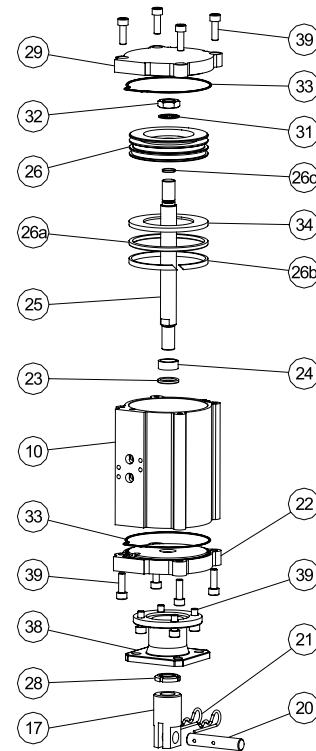
The cylinder barrel has a T groove, which makes it really easy to equip with magnetic limit switches.



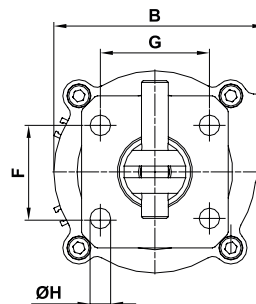
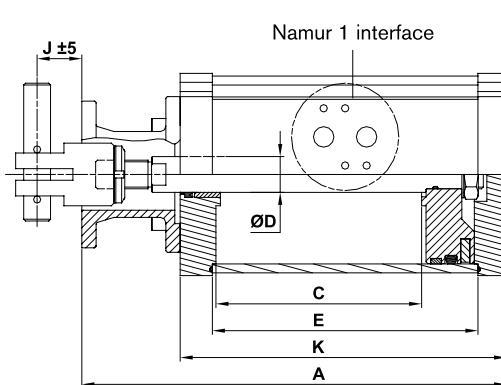
Part list & Dimensions Double Acting Actuator ACL 100

Pos.	Detail	Material
10	Cylinder barrel	Anodized aluminium (AL6063)
17	Gate clevis	Optional
20	Clevis pin	Optional
21	Split pins	Optional
22	Lower cover	Powder coated aluminium (AL6082)
23*	Lower cover o-ring	Nitrile
24	Lower cover bushing	Bronze
25	Piston rod	Steel (C45E), phosphated and chromed with molykote coating in the ends
26	Piston	Aluminium (AL6082)
26a*	Piston o-ring	Nitrile
26b*	Piston bearing	POM
26c*	Piston rod o-ring	Nitrile
28	Locking nut	Stainless steel (EN 1.4305/SS 2346)
29	Top cover	Powder coated aluminium (AL6082)
31	Piston washer	Stainless steel (A2)
32	Piston nut	Stainless steel (A2)
33*	Cover o-ring sealings	Nitrile
34	Magnetic washer	Plastoferrite
38	Valve adapter	Optional
39	Hex socket screws	Stainless steel (A2)

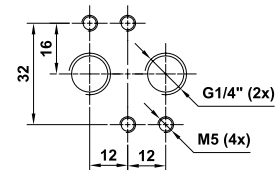
* Recommended spare parts



Drawing ACL 100



Namur 1 interface
VDI/VDE 3845



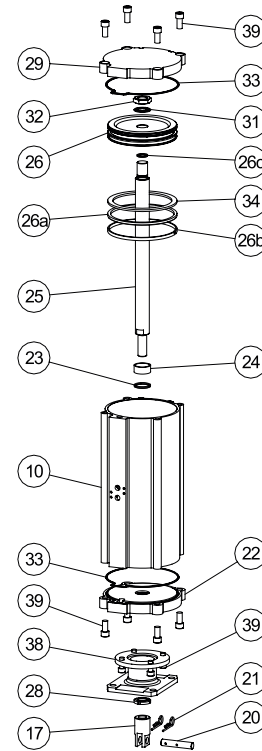
Dimensions (mm)

Type and size of barrel-stroke length	A	B	C	D	E	F	G	H	J	K	Weight	Air
ACL 100-90	213	118	90	20	124	52	61	11	25	158	4,1	6
ACL 100-115	238	118	115	20	149	52	61	11	25	183	4,5	7
ACL 100-140	263	118	140	20	173	52	61	11	25	208	4,6	9
ACL 100-165	288	118	165	20	199	52	61	11	25	233	4,9	10

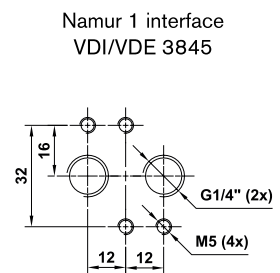
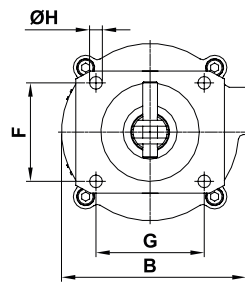
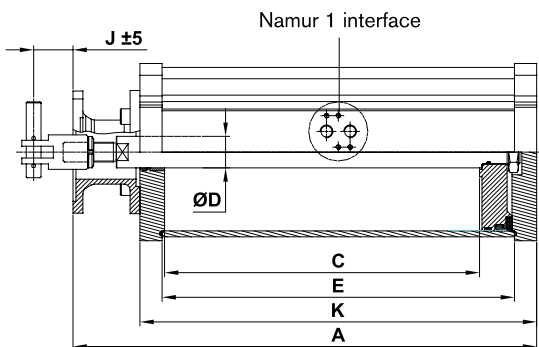
Part list & Dimensions Double Acting Actuator ACL 125

Pos.	Detail	Material
10	Cylinder barrel	Anodized aluminium (AL6063)
17	Gate clevis	Optional
20	Clevis pin	Optional
21	Split pins	Optional
22	Lower cover	Powder coated aluminium (AL6082)
23*	Lower cover o-ring	Nitrile
24	Lower cover bushing	Bronze
25	Piston rod	Steel (C45E), phosphated and chromed with molykote coating in the ends
26	Piston	Aluminium (AL6082)
26a*	Piston o-ring	Nitrile
26b*	Piston bearing	POM
26c*	Piston rod o-ring	Nitrile
28	Locking nut	Stainless steel (EN 1.4305/SS 2346)
29	Top cover	Powder coated aluminium (AL6082)
31	Piston washer	Stainless steel (A2)
32	Piston nut	Stainless steel (A2)
33*	Cover o-ring sealings	Nitrile
34	Magnetic washer	Plastoferrite
38	Valve adapter	Optional
39	Hex socket screws	Stainless steel (A2)

* Recommended spare parts



Drawing ACL 125



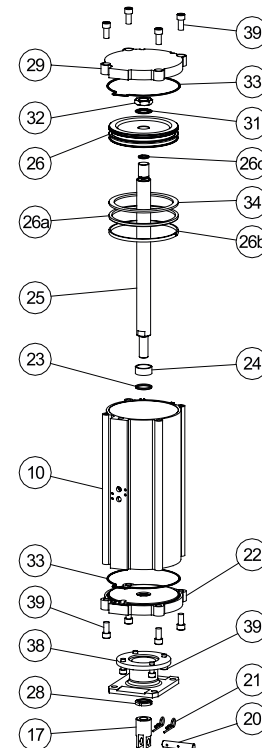
Dimensions (mm)

Type and size of barrel-stroke length	A	B	C	D	E	F	G	H	J	K	Weight	Air
ACL 125-115	285	147	115	32	153	52	61	11	25	198	7,6	11
ACL 125-165	335	147	165	32	203	52	61	11	25	248	8,0	16

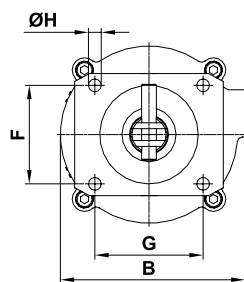
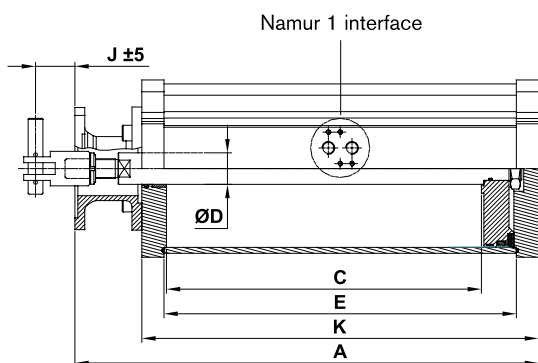
Part list & Dimensions Double Acting Actuator ACL 160

Pos.	Detail	Material
10	Cylinder barrel	Anodized aluminium (AL6063)
17	Gate clevis	Optional
20	Clevis pin	Optional
21	Split pins	Optional
22	Lower cover	Powder coated aluminium (AL6082)
23*	Lower cover o-ring	Nitrile
24	Lower cover bushing	Bronze
25	Piston rod	Steel (C45E), phosphated and chromed with molykote coating in the ends
26	Piston	Aluminium (AL6082)
26a*	Piston o-ring	Nitrile
26b*	Piston bearing	POM
26c*	Piston rod o-ring	Nitrile
28	Locking nut	Stainless steel (EN 1.4305/SS 2346)
29	Top cover	Powder coated aluminium (AL6082)
31	Piston washer	Stainless steel (A2)
32	Piston nut	Stainless steel (A2)
33*	Cover o-ring sealings	Nitrile
34	Magnetic washer	Plastoferrite
38	Valve adapter	Optional
39	Hex socket screws	Stainless steel (A2)

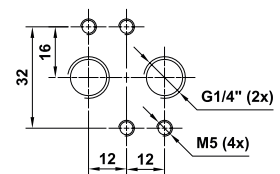
* Recommended spare parts



Drawing ACL 160



Namur 1 interface
VDI/VDE 3845



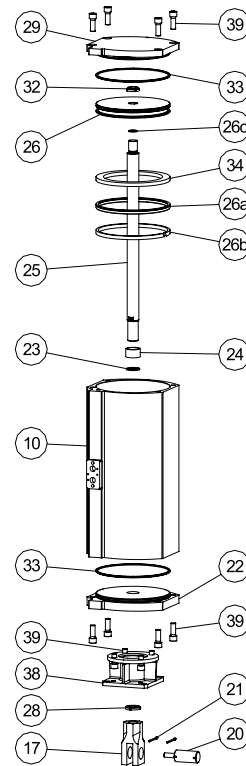
Dimensions (mm)

Type and size of barrel-stroke length	A	B	C	D	E	F	G	H	J	K	Weight	Air
ACL 160-115	285	188	115	32	153	52	61	11	25	198	10,0	18
ACL 160-140	310	188	140	32	178	52	61	11	25	223	10,5	22
ACL 160-165	335	188	165	32	203	52	61	11	25	248	11,0	26
ACL 160-215	366	188	215	32	253	100	110	13	40	298	13,0	34
ACL 160-270	421	188	270	32	308	100	110	13	40	353	14,0	43
ACL 160-320	471	188	320	32	358	100	110	13	40	403	15,0	51

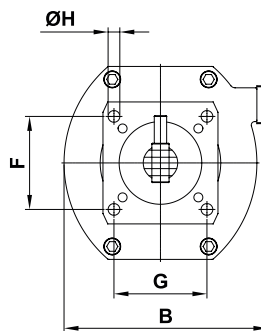
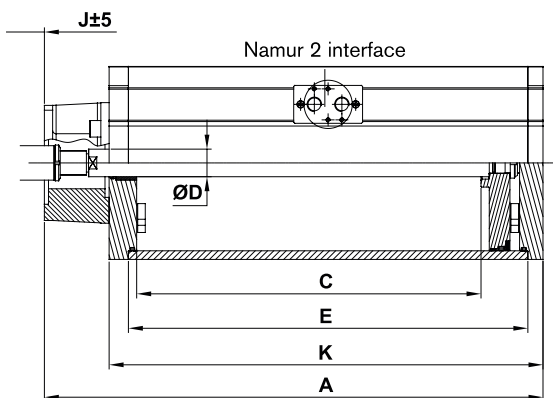
Part list & Dimensions Double Acting Actuator ACL 200

Detail	Material
Cylinder barrel	Anodized aluminium (AL6063)
Gate clevis	Optional
Clevis pin	Optional
Split pins	Optional
Lower cover	Powder coated aluminium (AL6082)
Lower cover o-ring	Nitrile
Lower cover bushing	Bronze
Piston rod	Steel (C45E), phosphated and chromed with molykote coating in the ends
Piston	Aluminium (AL6082)
Piston o-ring	Nitrile
Piston bearing	POM
Piston rod o-ring	Nitrile
Locking nut	Stainless steel (EN 1.4305/SS 2346)
Top cover	Powder coated aluminium (AL6082)
Locking nut	Stainless steel (A2)
Cover o-ring sealings	Nitrile
Magnetic washer	Plastoferrite
Valve adapter	Optional
Hex socket screws	Stainless steel (A2)

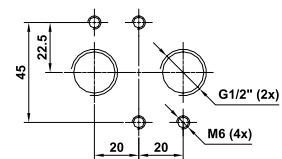
* Recommended spare parts



wing ACL 200



Namur 2 interface
VDI/VDE 3845



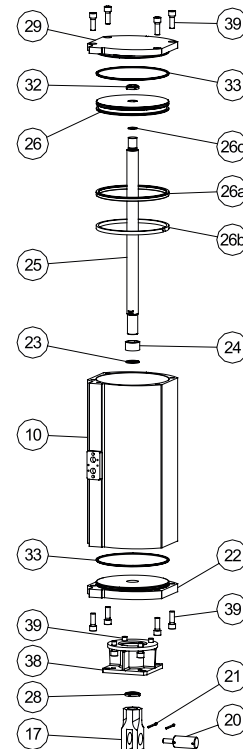
Dimensions (mm)

Type and size of barrel-stroke length	A	B	C	D	E	F	G	H	J	K	Weight	Air
00-215	432	245	215	40	290	100	110	13	40	338	30,0	53
00-270	487	245	270	40	345	100	110	13	40	393	32,5	67
00-320	537	245	320	40	395	100	110	13	40	443	34,5	80
00-350	567	245	350	40	425	135	135	17	55	473	36,0	87
00-400	637	245	400	40	475	160	160	21	55	523	46,0	99
00-450	667	245	450	40	525	160	160	21	55	573	50,0	112
00-550	787	245	550	40	625	160	160	21	55	673	54,5	136

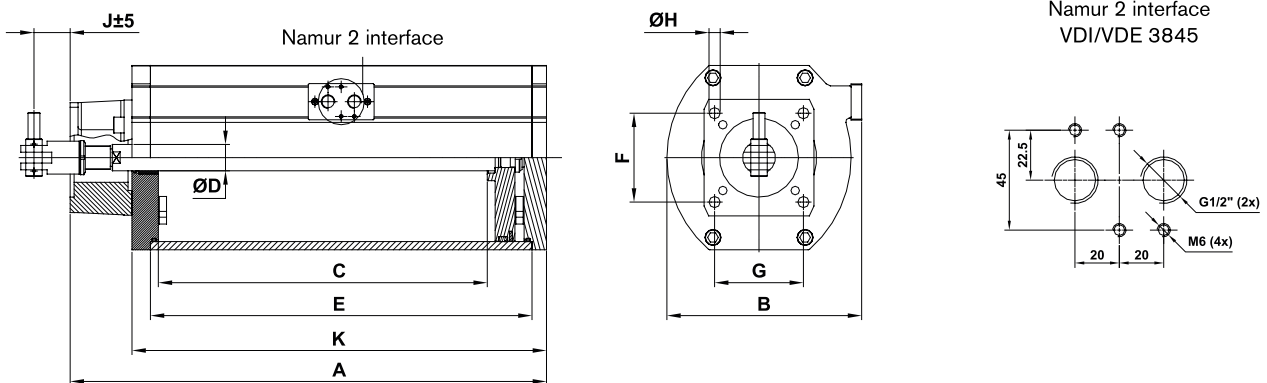
Part list & Dimensions Double Acting Actuator ACL 250

Pos.	Detail	Material
10	Cylinder barrel	Anodized aluminium (AL6063)
17	Gate clevis	Optional
20	Clevis pin	Optional
21	Split pins	Optional
22	Lower cover	Powder coated aluminium (AL6082)
23*	Lower cover o-ring	Nitrile
24	Lower cover bushing	Bronze
25	Piston rod	Steel (C45E), phosphated and chromed with molykote coating in the ends
26	Piston	Aluminium (AL6082)
26a*	Piston o-ring	Nitrile
26b*	Piston bearing	POM
26c*	Piston rod o-ring	Nitrile
28	Locking nut	Stainless steel (EN 1.4305/SS 2346)
29	Top cover	Powder coated aluminium (AL6082)
32	Locking nut	Stainless steel (A2)
33*	Cover o-ring sealings	Nitrile
34	Magnetic washer	Plastoferrite
38	Valve adapter	Optional
39	Hex socket screws	Stainless steel (A2)

* Recommended spare parts



Drawing ACL 250



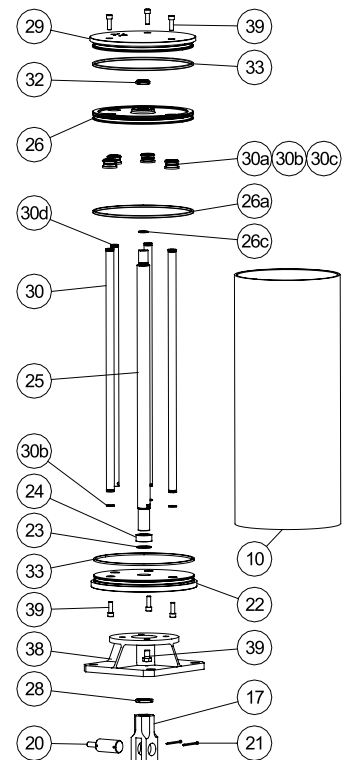
Dimensions (mm)

Type and size of barrel-stroke length	A	B	C	D	E	F	G	H	J	K	Weight	Air
ACL 250-350	574	296	350	40	430	135	135	17	55	480	48,0	135
ACL 250-400	644	296	400	40	480	135	135	17	55	530	58,0	154
ACL 250-450	694	296	450	40	530	160	160	21	55	580	63,5	173
ACL 250-500	744	296	500	40	580	160	160	21	55	630	71,0	193
ACL 250-575	819	296	575	40	655	230	230	26	55	705	75,0	221
ACL 250-630	874	296	630	40	710	200	200	21	55	760	78,5	243
ACL 250-800	1044	296	800	40	880	230	230	26	55	930	90,0	309

Part list & Dimensions Double Acting Actuator ACL 320

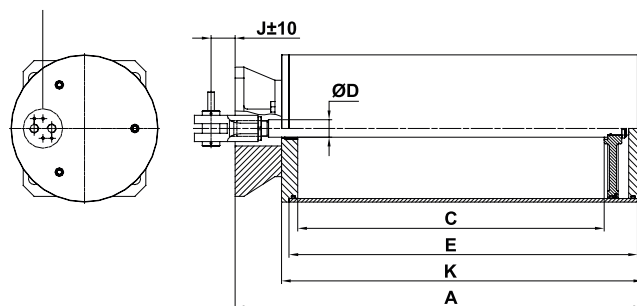
Pos.	Detail	Material
10	Cylinder barrel	Anodized aluminium (AL6063)
17	Gate clevis	Optional
20	Clevis pin	Optional
21	Split pins	Optional
22	Lower cover	Powder coated aluminium (AL6082)
23*	Lower cover o-ring	Nitrile
24	Lower cover bushing	Bronze
25	Piston rod	Steel (C45E), phosphated and chromed with molykote coating in the ends
26	Piston	Aluminium (AL6082)
26a*	Piston o-ring	Nitrile
26c*	Piston rod o-ring	Nitrile
28	Locking nut	Stainless steel (EN 1.4305/SS 2346)
29	Top cover	Powder coated aluminium (AL6082)
30	Guide bar	Stainless steel (AISI 304/EN 1.4301)
30a*	Guide bar bushing	Bronze
30b*	Guide bar o-ring	Nitrile
30c*	Clips	Steel
30d	Air supply bar	Chromed steel (E235)
32	Locking nut	Steel, zinc coated
33*	Cover o-ring sealings	Nitrile
38	Valve adapter	Optional
39	Hex socket screws	Stainless steel (A2)

* Recommended spare parts

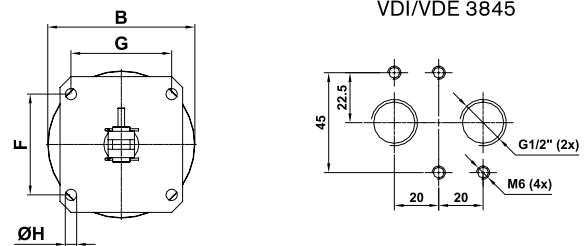


Drawing ACL 320

Namur 2 interface



Namur 2 interface
VDI/VDE 3845



Dimensions (mm)

Type and size of barrel-stroke length	A	B	C	D	E	F	G	H	J	K	Weight	Air
ACL 320-500	731	336	500	40	596	230	230	26	55	625	67,0	317
ACL 320-575	806	336	575	40	671	230	230	26	55	700	70,5	366
ACL 320-700	931	336	700	40	796	230	230	26	55	825	76,0	444
ACL 320-715	954	336	715	40	811	230	230	26	55	840	78,0	453
ACL 320-800	1031	336	800	40	896	230	230	26	80	925	84,0	507
ACL 320-915	1146	336	915	40	1011	230	230	26	80	1040	89,0	580
ACL 320-1030	1261	336	1030	40	1126	230	230	26	80	1155	95,0	653